



401 SOUTH STREET 4TH

CLASS A OFFICE SPACE

401 S. 4th Street, Louisville, Kentucky

INTRODUCING

401 SOUTH STREET 4TH

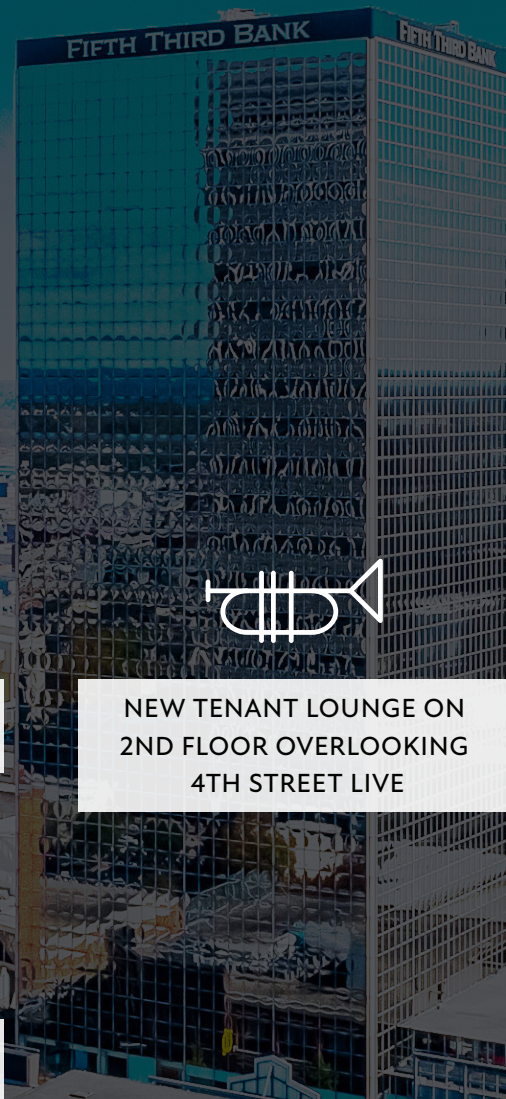
CATERING TO TENANTS' NEEDS

Well-positioned at the core of downtown Louisville, 401 South 4th Street is connected to 4th Street Live, as well as several hotels and parking garages. This location offers excellent amenities and convenient access to all local interstates.



UPCOMING RENOVATIONS WITH AMENITIES FOR TODAY'S WORKFORCE

Taking advantage of its prime location near the vibrant entertainment district, KennMar is creating tenant lounge and fitness areas overlooking Fourth Street, introduce a new conference space to accommodate a multitude of sizes, and transform the main lobby by incorporating stadium-style seating, a stylish coffee shop, and an inviting outdoor patio.



RE-IMAGINED LOBBY WITH CREATIVE SEATING OPTIONS



COFFEE SHOP WITH INDOOR AND OUTDOOR SEATING



NEW TENANT LOUNGE ON 2ND FLOOR OVERLOOKING 4TH STREET LIVE

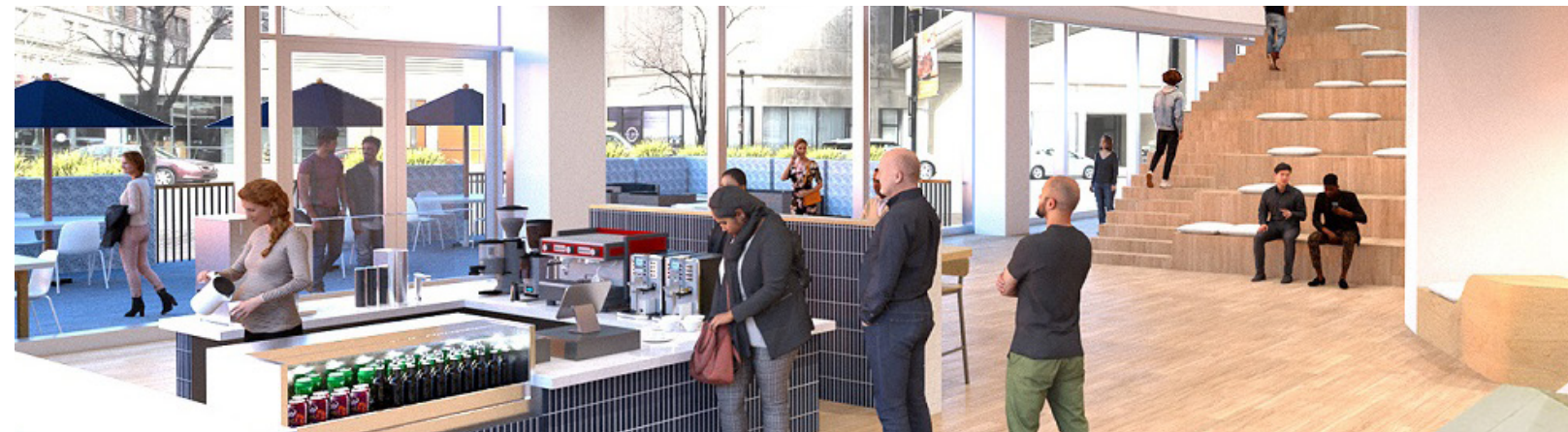


CONFERENCE CENTER WITH LATEST TECH



NEW FITNESS CENTER

RENOVATIONS ARE UNDERWAY!



COFFEE SHOP WITH INDOOR AND OUTDOOR SEATING

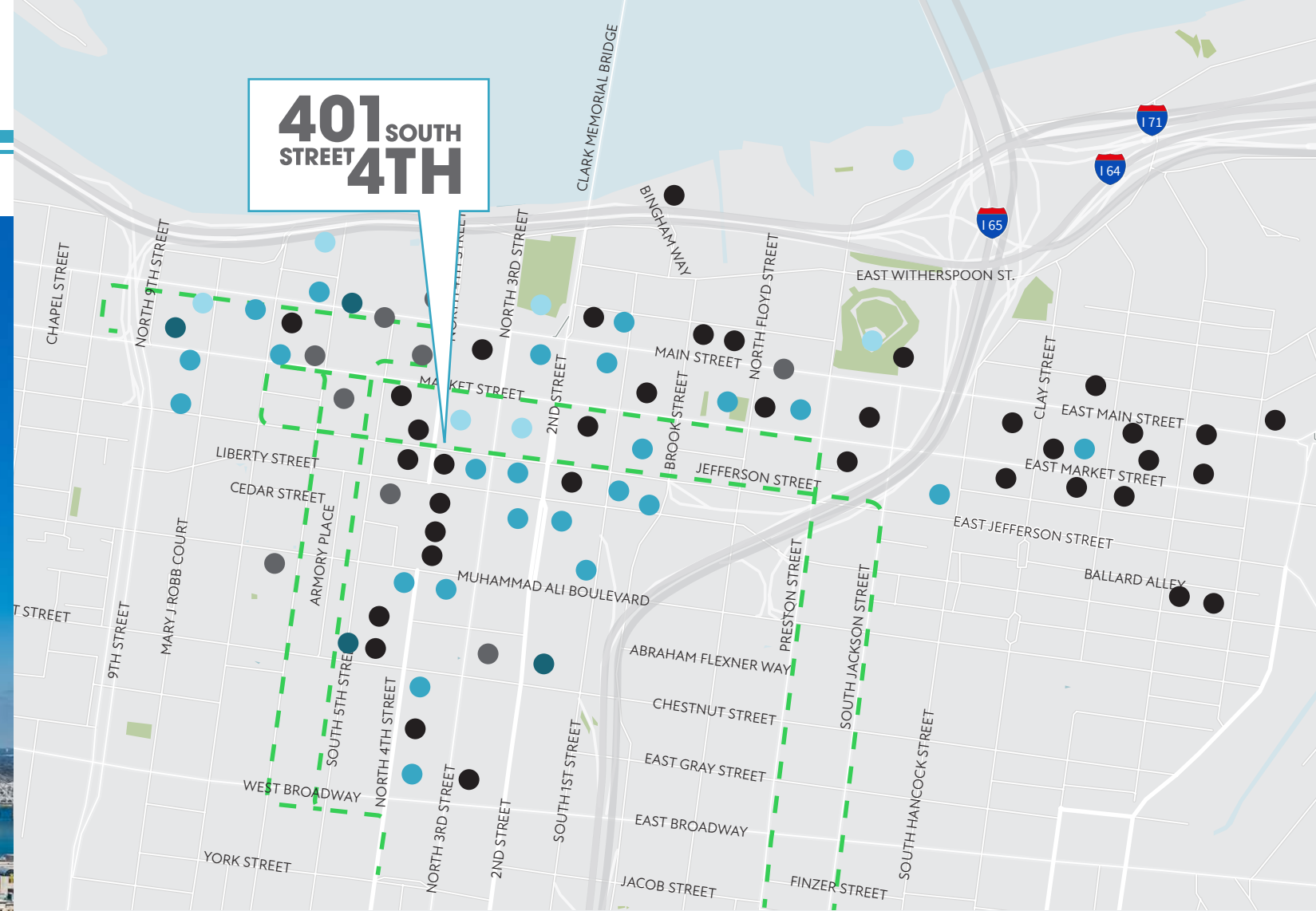


401 SOUTH STREET 4TH







WELL-POSITIONED AT THE HEART OF DOWNTOWN LOUISVILLE

401 South 4th Street

is ideally situated in the heart of Louisville's Central Business District, near the Ohio River to the north, as well as the rest of downtown. Its close proximity to the entertainment district, hotels and restaurants make it an extremely desirable location for employees.



AREA AMENITIES

-  Restaurant
-  Hotel
-  Attractions
-  Banking
-  Fitness
-  Frequent routes

LOCATION HIGHLIGHTS

88
WALK SCORE
Very Walkable

65
TRANSIT SCORE
Good Transit

82
BIKE SCORE
Very Bikeable



Walking distance to
20+
RESTAURANTS



15 min to
the LOUISVILLE
INTERNATIONAL
AIRPORT



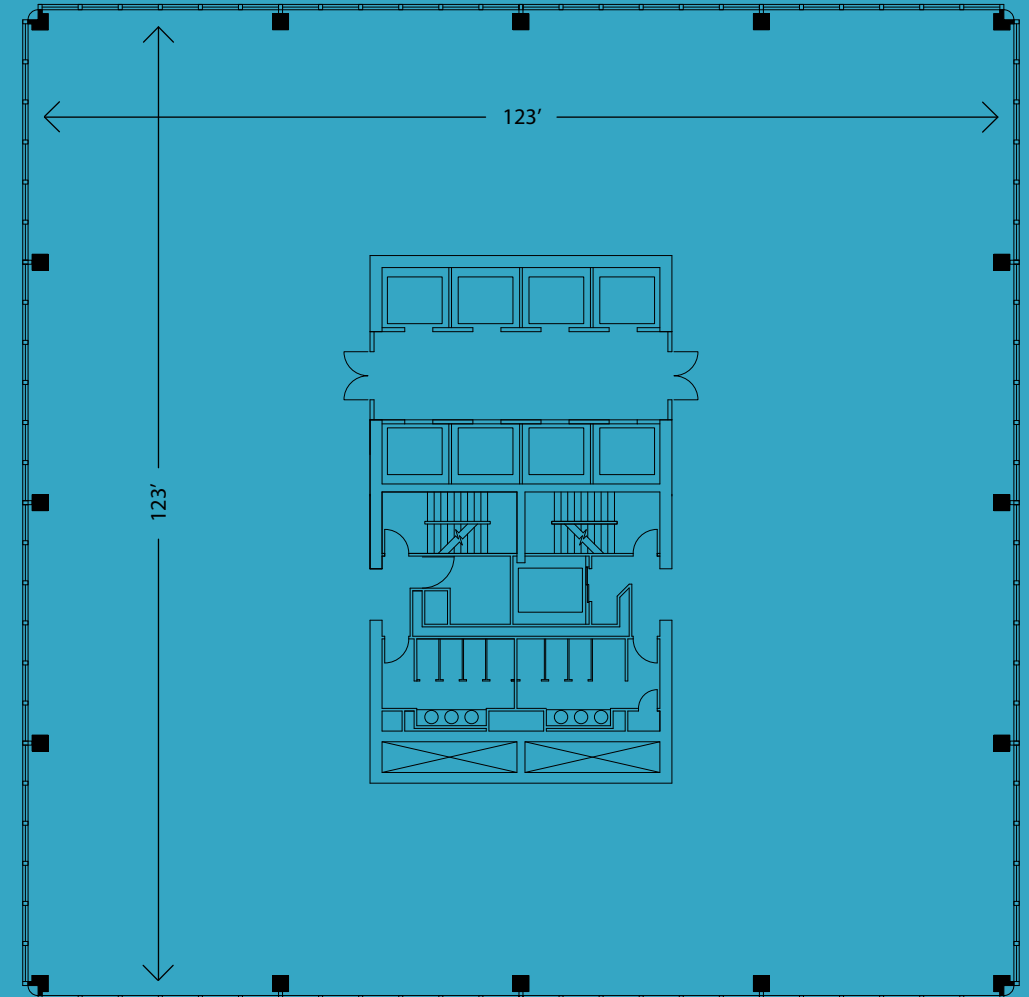
Less than
5 minutes from
I-71, I-64, AND I-65

ON LOOP TARC'S BUS SYSTEM
running directly in
FRONT
of the building

	Mechanical	Leased	Available
Floor	FIFTH THIRD BANK		
27	Leased		
26	Available 14,341 RSF		
25	Available 14,341 RSF		
24	Available 14,341 RSF		
23	Leased	Available 9,925 RSF	
22	Leased		
21	Available 14,341 RSF		
20	Available 14,341 RSF		
19	Leased		
18	Leased	Available 4,416 RSF	
17	Available 13,980 RSF		
16	Available 13,980 RSF		
15	Available 13,980 RSF		
14	Available 13,980 RSF		
12	Leased		
11	Leased	Available 7,989 RSF	
10	Leased	Available 2,730 - 8,432 RSF	
9	Leased		
8	Leased		
7	Leased		
6	Leased		
5	Leased		
4	Mechanical		
3	Leased		
2	Leased		
1	Leased		

OPPORTUNITIES AT 401 SOUTH 4TH STREET

401 South 4th Street can accommodate tenants of varying sizes from 2,000 SF to over 55,000 SF, with more than 30,000 SF available in the high-rise section, including a space featuring an interconnecting stairwell.



TYPICAL FLOOR PLATE



For more information, contact:

www.401s4th.com

Doug Owen, SIOR

Senior Vice President

doug.owen@jll.com

+1 502 394 2516

Yandell Wood, SIOR

Senior Vice President

yandell.wood@jll.com

+1 502 394 2518

7316 New LaGrange Road

Louisville, Kentucky 40202

+1 502 426 1300

www.us.jll.com/louisville



Although information has been obtained from sources deemed reliable, neither Owner nor JLL makes any guarantees, warranties or representations, express or implied, as to the completeness or accuracy as to the information contained herein. Any projections, opinions, assumptions or estimates used are for example only. There may be differences between projected and actual results, and those differences may be material. The Property may be withdrawn without notice. Neither Owner nor JLL accepts any liability for any loss or damage suffered by any party resulting from reliance on this information. If the recipient of this information has signed a confidentiality agreement regarding this matter, this information is subject to the terms of that agreement. ©2024. Jones Lang LaSalle IP, Inc. All rights reserved.